

## GageCal™

### PC Based Control

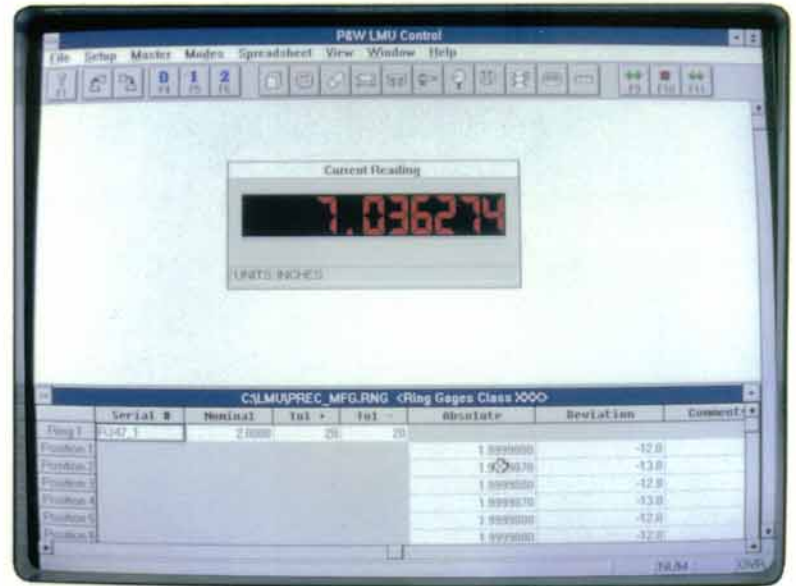
Powerful and resourceful, our GageCal™ control software sets a new standard for user-friendly calibration. By controlling the operation of the Labmaster and facilitating data collection, GageCal™ increases total measurement productivity. And with a graphics-rich user interface, you'll be amazed with how simple it is to use.

We designed GageCal™ to be intuitive and self-teaching. So much so, that the extensive context sensitive HELP screens are seldom called upon. Mouse or hot key driven, with pull down menus and icons that let you "click" your way through a calibration, GageCal™ helps put you at ease, so you can concentrate on the business of measuring. And the Microsoft® WINDOWS™ environment allows multitasking and data export to other programs such as gage management, EXCEL™, WORD™, or any other WINDOWS™ program.

### Smart Spreadsheets Speed Up Data Entry

Faster measurement begins with selecting an icon (or pressing the hot key) to first master the instrument, and then calibrate your particular gages. The user can choose between pre-defined applications (*Gage Blocks, Rings, Plugs, etc.*) and *Free Measure* (for custom applications). With an application selected, dialogue boxes will continuously prompt the user for information that will build and open a "smart" spreadsheet. This "smart" spreadsheet, in the case of pre-defined applications, will automatically enter nominal sizes, tolerance bands, define best wire size for thread measurements, calculate pitch diameters, and flag out of tolerance conditions as appropriate.

The operator simply chooses the class of gage (ie., XX or XXX), in the dialogue box, selects the appropriate cell in the "smart" spreadsheet, and clicks on the *close probe* icon (or presses the footswitch). GageCal™ displays the measurement in the "Current Reading" window and automatically updates the record. The data can be saved, printed in a customized report, or exported to many popular gage management software packages.



### Gage Management

Our optional gage management module, designed in accordance with ANSI Z540-1 and ISO 9000, puts gage information at your finger tips. It represents a logical addition to the LABMASTER® because it makes storing, retrieving and reporting gage information quite simple. You will be able to track and display gage history, wear data, current users, the product evaluated with the gage, calibration dates, days since last calibration, and much more.

Additional subsystems of the gage management module include gage studies, gage crib, gage preventative maintenance, and gage archives. With them, you'll be able to control your gage data as well as your gages.

### Detailed Printouts to Your Specifications

The reporting system is extensive, offering both standard and custom reports. Common reports include standard calibration reports, gages due, recall letters, gage lists, supplier summaries, gage study listings, and many more.

